

Personal Learning Device (PLD) Briefing for Sec 1 Parents



25th Jan 2022 7.30pm



The National Digital Literacy Programme (NDLP)

1. The NDLP was launched in March 2020 to **make digital learning inclusive by equipping students with the digital literacies** to be future-ready.
2. Under the NDLP, every secondary school student will **own a school-prescribed personal learning device (PLD)**. Students may use funds from their Edusave Account to pay for the PLD.

Intended Outcomes

The use of the personal learning device for teaching and learning aims to:



Support the Development of Digital Literacies



Support self-directed and collaborative learning



Enhance Teaching and Learning

Learning with a Personal Learning Device

Dunearn Secondary School



How will your child use the Personal Learning Device?

- At **Dunearn Secondary School**, your child will be using the PLD in the following ways

Access self study
and revision
materials

Making and taking
notes as the
teacher is teaching

Researching information
and extending their
understanding

Participate
collaborative
discussions

Participate in quizzes

Watching
educational
videos

Participate in quizzes to
assess their learning
and understanding

Participating in
science online
simulations

Plan their own
learning

How do IT devices help teachers in teaching and learning?

With devices and technology...

Provide the teacher **IMMEDIATE** information on student's level of understanding

Facilitate immediate interventions by teachers

Helps teachers assess students' extent and depth of learning

Students are more engaged in learning

Enhance learning experiences for students through inclusion of engaging and interactive visuals and media

Deepen students' learning through "active learning"

Promote and encourage students to become self-directed learners

What technologies will our teachers be using?



SINGAPORE
STUDENT LEARNING SPACE
LEARN ANYTIME, ANYWHERE, AT ANY PACE

What can you do with SLS?

You can:

- Revise your subjects at home
- Learn with interactive content

Short Answers
Room ID 09432

13

NEW QUESTION

LOG OUT ROOMS
CLEAN UP TOTAL CLEAN

MCQ

Hide Show Results

1. Because it conduct electricity
2. sodium fluoride conduct electricity when it is molten or dissolved in water
3. It has free moving ions
4. sodium fluoride is an ionic compound , when dissolved in water or molten , it has free moving or mobile ions hence electricity can be conducted
5. the sodium conduct electriiyu bcos
6. When it is dissolved in water or molten it will conduct electricity
7. sodium chloride is an ionic compound. when dissolved or molten in water, the ions are able to move freely thus conducting electricity.
8. Sodium chloride is an ionic compound. When dissolved in water or molten, it has free moving or mobile ions, Hence,electricity can be conducted.
9. Sodium Fluoride is an ionic compound.When dissolved in water or molten, it has free moving ions.Hence, electricity can be conducted
10. Sodium chloride is an ionic compound.When dissolved in water or in a

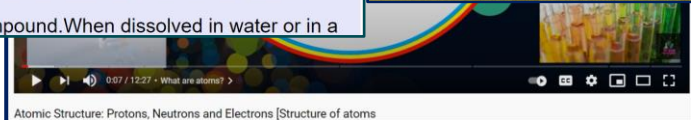


Ctrl

Open lots of work with the control key

Reuse old posts

Keep everyone up to date with a shared calendar.



Connect to other tools easily

Organize and sort posts by topic

Device Information

Dunearn Secondary School Personal Learning Device

The school will be using the **Acer Chromebook Spin R752TN** for teaching and learning.

Bundle total cost with GST: \$493.20

- 11.6" wide screen
- Precision stylus
- Foldable into tablet style
- Chrome Operating System
- **Kensington combination lock**
- **8GB RAM upgraded**
- 3 year warranty and insurance
- CPU intel Celeron 4020



Dunearn Secondary School Personal Learning Device



Why a Chromebook? Why not a Windows notebook? Or an IPAD?

Hardware requirements to run a Chromebook operating system is light. No necessity for high-end hardware. Students **do not have to worry** about the device being “obsolete” even after 5 years of usage.

Low maintenance,
easy operating
system updates

Robust
operating
system

Seamless browser
compatibility to
learning sites, Google
Classroom and SLS

Virus resistant
(no antivirus
needed)

Easy central
management by
technical staff

Durable and rugged
construction

Has a native
physical keyboard

Reference:

<https://www.computerworld.com/article/3453943/sorry-apple-for-the-education-market-chromebook-is-the-clear-winner.html>

Dunearn Secondary School Personal Learning Device

Based on overall **school and subject needs**, the school chose **Acer Chromebook Spin R752TN**) for the following reasons:

- Chrome Web browser with seamless **compatibility** with SLS and other learning websites.
- Has a **physical keyboard**. Has a good balance between **screen size and device size** (est 29cm x 22cm).
- **Weight** is reasonable. About 1.25kg.
- **Designed and built for rugged usage. Drop test from 1.2m, keyboard water spill resistance, resistant to rain and splash.**
- This model has a **precision stylus** that allows handwriting, sketching (students taking D&T, art, maths).

-
- **Front camera, rear camera** for meetings and class projects for meetings, video recordings, project work
 - Foldable into a **tablet**
 - **Battery life** 10hrs
 - 2 USB C ports, 2 USB 3.1 ports.
 - Device can be secured to table with **Cable Lock**
 - Allows charging by **USB C portable powerbanks** (must be PD or QC rated at >20watt)

Personal Learning Device Bundle

Device Bundle includes

- **Acer Chromebook Spin R752TN (convertible)**
- Kensington Cable Lock
- Upgraded RAM (8GB)
- 3 year Insurance and Warranty
- Bag

Insurance and Warranty



Insurance*

The device insurance coverage includes:

Damage to or loss of device from the following which are non-manufacturer defects or internal mechanical faults:

- a) Fire
- b) Lightning
- c) Power Surges
- d) Accidental e.g. water spillage, drop etc
- e) Theft due to forcible entry
- f) Robbery

Warranty

This warranty warrants that the product will be free from **manufacturing defects** in materials and workmanship for the limited warranty period of 3 years.

**The insurance coverage is only applicable to situations of damages and loss where the student has taken precautions to safeguard the device.*

Insurance and Warranty



Enhanced Device Bundle

- ✓ 3-year insurance + 3-year warranty
- ✓ Allows for 2 repairs or 1 replacement

Note:

Once insurance is claimed for a replacement device, the insurance coverage will cease and the replacement device will not be covered by insurance.



Information



	Issues	Actions
1	Adhoc purchase of Device	✓ Inform School ICT Team
2	1 to 1 Exchange within 7 days from unboxing	✓ Email to Acer Service Centre^A
3	Lost Device	✓ Make a police report ✓ Inform School ICT Team ✓ Email Acer Service Centre ^A with police report
4	Device Repair	Hardware issue ✓ Email Acer Service Centre ^A OR ✓ Log a case to School ICT Team for fortnight collection service in school
5	Insurance Claim	✓ Email Acer Service Centre ^A

^AAcer Service Centre
Email: acercare.sg@acer.com

Please **first** write to the email above with:

Subject header: MOE PLD
<Student Name> <School>
<Serial Number>

Content: School, Device model, Serial number, Brief description of problem, Person to contact and Contact number



Hardware warranty

Insurance coverage that covers
damage and total loss BOTH locally
and overseas

Insurance Coverage

Coverage	Up to 3 years
Sum Insured	Equivalent to unit price of device
Coverage	No Excess Plan (All types and All kinds of accidental damages such as: Fire, Lightning, Power Surges, Accidental such as Water Spillage, drop etc, Theft due to forcible entry, Robbery (Police Report will be mandatory))
Exclusions included but not limited to	Warranty claims consisting of: a) Manufacturing defects b) Internal mechanical faults
Location of Insured premise	No geographical limits

School-based ICT Support

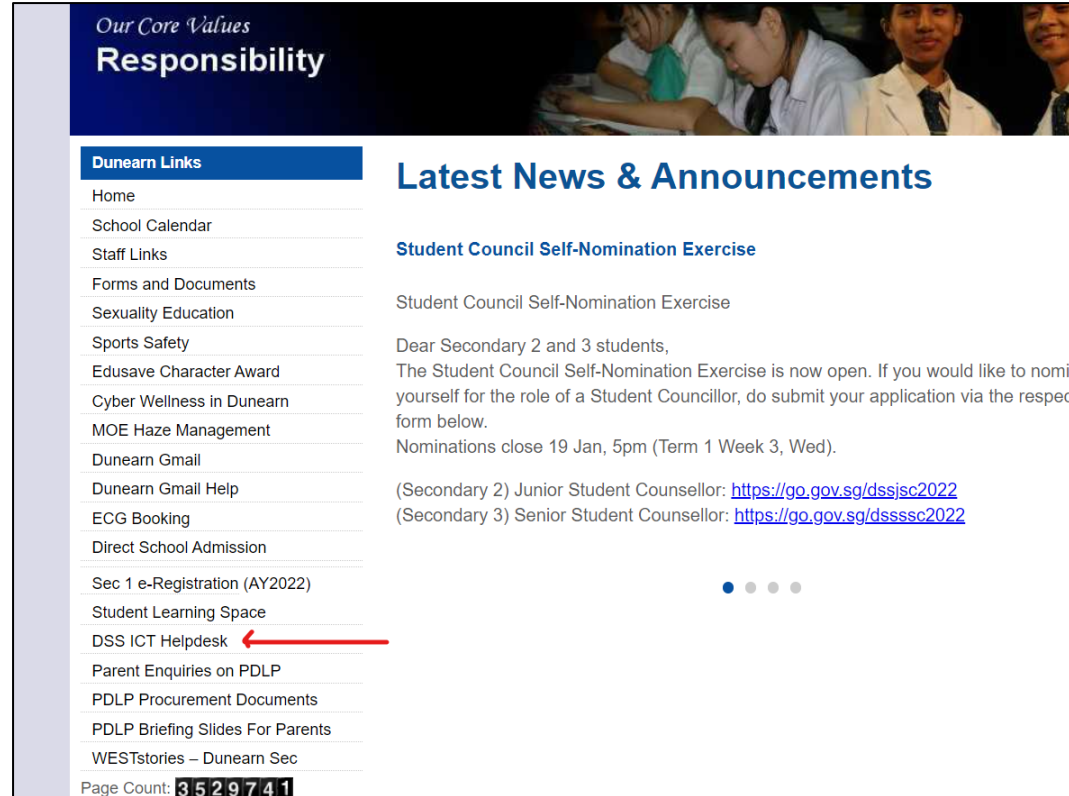
SCHOOL WEBSITE

<https://dunearnsec.moe.edu.sg/>

Students can seek basic troubleshooting support in school by clicking the **DSS ICT Helpdesk** link

Arrangements will be made with your child directly

Major repairs by Acer - Fortnightly collection and delivery of faulty units by Acer



The screenshot shows the website header with 'Our Core Values' and 'Responsibility'. Below is a 'Dunearn Links' menu with a red arrow pointing to 'DSS ICT Helpdesk'. To the right, there is a 'Latest News & Announcements' section with a news item titled 'Student Council Self-Nomination Exercise'.

Our Core Values
Responsibility

Dunearn Links

- Home
- School Calendar
- Staff Links
- Forms and Documents
- Sexuality Education
- Sports Safety
- Edusave Character Award
- Cyber Wellness in Dunearn
- MOE Haze Management
- Dunearn Gmail
- Dunearn Gmail Help
- ECG Booking
- Direct School Admission
- Sec 1 e-Registration (AY2022)
- Student Learning Space
- DSS ICT Helpdesk**
- Parent Enquiries on PDLP
- PDLP Procurement Documents
- PDLP Briefing Slides For Parents
- WESTstories – Dunearn Sec

Page Count: **3 5 2 9 7 4 1**

Latest News & Announcements

Student Council Self-Nomination Exercise

Student Council Self-Nomination Exercise

Dear Secondary 2 and 3 students,
The Student Council Self-Nomination Exercise is now open. If you would like to nominate yourself for the role of a Student Councillor, do submit your application via the respective form below.
Nominations close 19 Jan, 5pm (Term 1 Week 3, Wed).

(Secondary 2) Junior Student Counsellor: <https://go.gov.sg/dssjsc2022>
(Secondary 3) Senior Student Counsellor: <https://go.gov.sg/dssssc2022>

Does the insurance cover the accessories too (e.g. styluses, keyboard cases)?

Insurance coverage is for the main device only and does not cover accessories

How do I replace a missing accessory?

Parents can buy replacement accessories from the Contractor's Portal (URL can be found under Contractor's information)

Can students still send their devices to their contractor's service centres for repairs after the end of the warranty period and how will the charges be imposed?

After the expiry of the device warranty period, students can still send their device to the contractor's service centre for repair. *Alternatively, students can consider going to other shops to perform the repairs after the warranty is over.*

How long do I need to keep the device original packaging box before discarding it?

Please keep the device original packaging box for at least 7 days in case of any 1-to-1 exchange .

Parents and Students can also contact



Help Desk Number:
6895 6278



Help Desk Operating Hours:
Mon, Tue, Thu, Fri: 0845 – 1715
Wed: 0845 – 1945
Sat: 0900 – 1200
Sun and Public Holiday: Closed



Help Desk Email:
acercare.sg@acer.com



Website:
<https://secured.acer.com.sg/pld>
(For buying of accessories)

Service Centre



Location:

29 International Business Park
Singapore 609923

(1.1km from Jurong East MRT)

Service Centre Number: 6895 6278

Service Centre Email: acercare.sg@acer.com

For any service case, please **first** write to the email above with:

Subject header: MOE PLD <Student Name> <School>
<Serial Number>

Content: School, Device model, Serial number, Brief description of problem, Person to contact and Contact number

Opening hours:

Mon, Tue, Thu, Fri: 0845 – 1715

Wed: 0845 – 1945

Sat: 0900 – 1200

Sun and Public Holiday: Closed



Note: Device Collection will be at this service centre.

Funding and Purchasing Matters

PDLP Chromebooks purchased in your child's **primary school** can be used in Dunearn Secondary School's PDLP program

The chromebook will be automatically joined to Dunearn's network if the previous school has successfully "decommissioned" your child's device.

Please approach your form teacher if your child faces issues.

Funding Support for Singapore Citizen (SC) Students

The cost of the device bundle can be paid using your child's/ward's Edusave account, after setting aside provision for payment of second-tier miscellaneous fees.

To ensure the affordability of devices, MOE has provided Edusave top-ups of \$200 in 2020 and \$200 in May 2021 (as part of the Household Support Package announced in Budget 2021), to all eligible SC students in primary and secondary schools.

This is on top of the annual \$290 credited into the Edusave account for Secondary School students and \$230 for Primary School students.

Funding Support for Singapore Citizen (SC) Students

- For SC students who are on MOE Financial Assistance Scheme or whose family's monthly income meets the following criteria:

Gross Household Income (GHI) \leq **\$2,750**, or

Per Capita Income (PCI) \leq \$690

the school will **subsidise 50%** of device bundle cost or \$350, whichever is lower.

- The remaining amount will be payable from the students' Edusave account. If there is insufficient balance in the students' Edusave account for the remaining amount, school will provide additional subsidy so that the cash out-of-pocket (OOP) is \$0.

#PCI is Gross Household Income divided by the number of household members.

Funding Scenario: Student A (SC)



**Bundle total
cost with GST:
\$493.20**

Student A (SC on MOE FAS)

GHI ≤ \$2,750 or PCI ≤ \$690

Device Bundle Cost	\$493.20
Student Subsidy	\$246.60 (rounded up to nearest 10 cents)* *(Modify accordingly)
Available Edusave Balance <i>(After setting aside for 2nd-tier misc fees)</i>	\$200.00 before deduction \$200.00 will be deducted
Additional Subsidy	\$46.60
Cash Out-of-pocket	\$0.00

For more details on financial assistance, please approach the school.
Each student would receive a personalised bill subsequently.

Funding Support for Singapore Citizen (SC) Students

- For SC students whose family's monthly income is:
 $\$2,750 < \text{Gross Household Income (GHI)} \leq \$4,000$, or
 $\$690 < \text{Per Capita Income (PCI)} \leq \$1,000$
the school will **subsidise 30%** of device bundle cost or \$200, whichever is lower.
- The remaining amount will be payable from the students' Edusave account. If there is insufficient balance in the students' Edusave account for the remaining amount, **school will provide additional subsidy** so that the cash out-of-pocket (OOP) is **not more than \$50**.

#PCI is Gross Household Income divided by the number of household members.

Funding Support for Singapore Citizen (SC) Students

- SC students whose family's monthly Gross Household Income (GHI) > **\$4,000** or monthly Per Capita Income (PCI) > \$1,000, **no subsidy will be provided.** Parents/Guardians can use their child's/ward's **Edusave** or cash to defray the device bundle cost.

#PCI is Gross Household Income divided by the number of household members.

Funding Scenario: Student x (SC)



**Bundle total
cost with GST:
\$493.20**

Student x (Not Eligible for Subsidy) GHI > \$4,000 or PCI > \$1,000	
Device Bundle Cost	\$493.20*
Available Edusave Balance <i>(After setting aside for 2nd-tier misc fees)</i>	\$200.00 before deduction \$200.00 will be deducted
Cash Out-of-pocket	\$293.20*

For more details on financial assistance, please approach the school.
Each student would receive a personalised bill subsequently.

Supporting Students in the Safe and Effective Use of the Devices

Supporting Students in the Safe and Effective Use of the Devices

The school has measures in place to enable a safe and conducive learning environment for students in the use of PLDs for teaching and learning

1. Classroom management and routines
2. Educating students on Cyber Wellness
3. Device Management Application (DMA)

Classroom Management and Routines

- The Form Teachers will be briefing the Sec 1 students on **personal routines** to keep their devices safe while in school.
- Students will lock their devices in their device lockers when not in use during lessons. Where possible and practical, students could also bring their devices (in their bags) when moving from class to class. No device is to be kept overnight in the lockers.
- The school will be reviewing these measures periodically.

Cyber Wellness Education

Educating students on Cyber Wellness

MOE has made significant changes to the **Character and Citizenship Education**. Cyber Wellness lessons will feature significantly in the **CCE2021 lessons**. Students will continue to learn to be **respectful, safe, and responsible users of technology**.

Topics covered in the **Cyber Wellness lessons** include:

- Cyber Use
- Cyber Identity
- Cyber Relationships
- Cyber Citizenship
- Cyber Ethics

Cyber Wellness Education

The school also has strategies to enable and support school-wide implementation of CCE. These include:

Promoting a Peer Support Culture

- All students will learn about their social support circle and how to seek help, as well as how to show kindness and offer help to peers in need, as part of a caring and enabling school environment
- **Peer Support Leaders (PSL)** will play an important role in supporting their peers who may need help, in influencing and inspiring their peers to behave positively, as well as in fostering bonds and sense of belonging to the school community.
- **Peer Support Leaders** will also be trained in supporting peers for cyber issues such as cyber bullying.

Cyber Wellness Education

In addition, through various programmes in school, students will continue to learn to be **respectful, safe, and responsible users of technology.**

- A **e-guidebook** on Cyber Wellness will be shared with students to provide knowledge to help them manage cyber issues
- Sharing of Cyber Wellness reminders, information and tips via **Assembly programme** or cohort-level platforms such as Year Head talks.

Device Management Application

- The Device Management Application (DMA) software will be installed* on all students' devices to provide a safe learning experience for your child, and to prevent misuse of the device.
 - Installation of the DMA will be performed after the collection of the device. Students will be guided on the installation
 - This applies to both devices purchased through the school and pre-existing student-owned devices
- The DMA will be **funded by MOE** and will be **uninstalled** from the device **when your child graduates/leaves the school.**

Role of DMA In Supporting Student Learning

Components of DMA

The **Device Management Application (DMA)** software consists of the following three components:

- **Mobile Device Management Service**
- **Classroom Management Service**
- **Usage Management Service**

Providing Parents/Guardians with Greater Choice for After-School PLD Use

The school will provide parents/guardians with more information on exercising the options.

Default	Option A	Option B
<p>In-school DMA settings will continue after school hours</p>	<p>Parents/Guardians can modify the DMA settings after school hours</p>	<p>Parents/Guardians can choose to disable DMA after school hours</p>
<p>For parents/guardians who want their child's/ward's use of the devices to be restricted only to teaching and learning, and prefer to leave it to the school to decide on DMA settings after school hours.</p>	<p>For parents/guardians who want more leeway over the use of the device, and prefer to take charge of the level of restrictions for their child's/ward's use of the device after school hours.</p>	<p>For parents/guardians who do not want their child's/ward's use of the device to be regulated by DMA after school.</p>

- Having default school settings continue after school hours is the best option for parents/guardians who prefer not to, or do not feel ready to manage their child's/ward's device use on their own.
- Parents/guardians can request to change their choice of DMA settings at any time.

Providing Parents/Guardians with Greater Choice for After-School PLD Use

	Default	Option A	Option B
Protecting students from objectionable content	MOE/school sets level of web content filtering	Parents/Guardians can apply additional content filtering	No content filtering
Reduce distractions from learning through control of applications	Parents/Guardians and students unable to install additional applications	Parents/Guardians and/or students can install applications after school hours, but these applications are disabled during school hours	
Limit screen time	School sets hours during which students are able to use the device online	Parents/Guardians can modify the amount of screen time*	No control over screen time

*Screen time limits set by the school will override parents'/guardians' settings during school hours.

Providing Parents/Guardians with Greater Choice for After-School PLD Use

	Default	Option A	Option B
Parent/guardian account	Provided to allow monitoring of PLD activities after school hours		Not provided
Monitor students' cyber activities	Parents/Guardians can track their child's/ward's browser history after school hours		<p>Parents/Guardians will not be able to monitor or control their child's/ward's use of the device through the DMA after school hours</p> <p>No data* will be collected during use of PLD after school hours</p>

In-School DMA Settings (Default)

Schools will determine DMA settings for **in-school use** that are designed to help students **focus on learning in a safe and conducive online environment**. As a default, these settings will continue to be in place after school as well:

- MOE and the school will set the level of web content filtering, including filtering out **social media sites, pornography, gambling, extremist and violence-related sites**
- PLD usage time will be set **6am to 6pm**
- The school will determine the apps and programmes to be installed to support teaching and learning
- A **parent/guardian account*** will be enabled to **allow you to monitor your child's/ward's PLD activities** and partner the school to ensure the student's cyber well-being.

**Parent/Guardian will receive an activation email when the Parent Portal is available.*

Data Collected by the DMA

The DMA does **NOT** collect any of the following data:

- Login IDs and passwords entered into websites or into any applications
- Actions performed (e.g. posts, online comments, items added to a shopping cart, etc.) when visiting websites and using apps
- Documents and photos stored in the PLDs
- PLD location
- Webcam videos and microphone recordings

Deciding on the choice of after-school DMA option

Parents may wish to consider the following questions before deciding on the choice of after-school DMA option which is best for your child's/ward's learning.

1. Child's current device usage habits

- How much **time** does my child spend on their device?
- How well is my child able to regulate their device usage on their own?
- Does my child get easily distracted while doing online learning?

2. Parental involvement

- How confident and familiar am I with managing my child's cyber wellness?
- Are there existing routines and open conversations on the use of the Internet at home?
- Am I aware of how to prevent different types of cyber threats that my child might face?



Have a conversation with your child to talk about which setting is best for your child's learning.

Parents' Role

- We would like to **partner parents** to ensure that students are well supported in their use of technology for learning
- As parents, you can help in the following ways:
 - Model good digital habits for your child.
 - Know your child well, and have conversations with your child about safe and responsible use of technology.
 - Set ground rules for internet use.
 - Navigate the internet together to understand their usage.

Additional Resources for Parents

To support you in keeping your child/ward safe online, you may refer to these additional resources:

- Parent Handbooks (I) and (II) on Learning with a Personal Learning Device (shared by the school)
- Parent Kit on Cyber Wellness for Your Child (<https://go.gov.sg/moe-cyber-wellness>)
- Schoolbag article 'Keeping our teens safe online' (<https://www.schoolbag.edu.sg/story/keeping-our-teens-safe-online>)
- MOE Cyber Wellness Programme (<https://www.moe.gov.sg/programmes/cyber-wellness/>)
- Media Literacy Council (<https://go.gov.sg/better-internet-sg>)
- National Library's Learning & Information Literacy Resources (<https://sure.nlb.gov.sg/>)
- TOUCH Community Services (<https://help123.sg>)

What's Next

What's Next

For Singapore Citizens

Time Frame	Activity
By 31st Jan 2022	<p>Please use the online link https://go.gov.sg/pdlpadmin found in the PG message to submit your order before 31st Jan 2022. Singpass needed.</p> <p>Cant access with Singpass? Obtain hardcopy from your child's Form Teacher.</p> <ul style="list-style-type: none">• Annex D - Intent to purchase*• Annex E - Use of Edusave *• Annex F – Authorization for collection of PLD by parents
March/April 2022	Collection of devices by students. Guided by Form Teachers, vendor staff and MOE officers

What's Next

For Permanent Residents (PR) / International Students (IS)

Time Frame	Activity
31st Jan 2022	Submit Letter to Parents for Procurement which includes the following annexes: <ul style="list-style-type: none">• Annex D - Intent to purchase• Annex F – Authorization for collection of PLD by parents
By 10th Feb 2022	<u>After</u> collection of the school bill, parent/guardian to make payment via Cash / Cheque (payable to Dunearn Secondary School)
March/April 2022	Collection of Devices by students

Collection of Devices

Your child will be collecting his/her device **from March/April 2022**

- Your child will be guided by Form Teachers/Vendor staff during device collection on how to **verify the condition** of the device.
- Should you be concerned that your child will not be able to properly verify the condition of the computing device, please arrange to either collect the computing device **personally or appoint an adult proxy. (Fill in and submit form Annex F) .** Collection is from **Acer Building** (office hours)

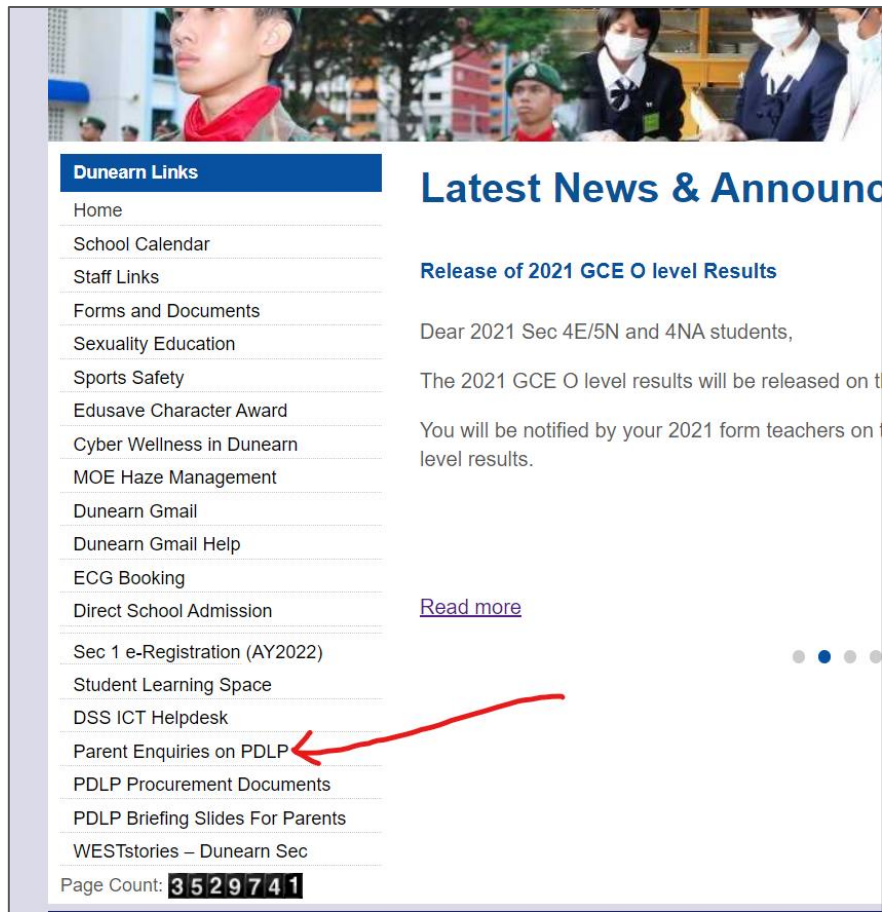
Important Contacts/ Helplines

To access/find out more about...	Contact/Helpline
This deck of slides	Sent via PG and School Website after 3 rd Feb 2022
Edusave Balance	6260 0777
Financial assistance available	DSS General Office main line
Other queries	Refer to the Frequently Asked Questions document attached in the Parent's Gateway message OR Use the link Parent Enquiries on PDLP on the school website

Questions and Queries

Pls submit your queries at
go.gov.sg/pdlopenquiry

Or from the school website at
dunearnsec.moe.edu.sg



The screenshot shows the Dunearn Links website. At the top, there is a banner image of students. Below it, the 'Dunearn Links' navigation menu is visible, listing various services. A red arrow points to the 'Parent Enquiries on PDLP' link. To the right, the 'Latest News & Announcements' section features a news item titled 'Release of 2021 GCE O level Results' with a 'Read more' link. The page footer shows the page count as 3529741.

Dunearn Links

- Home
- School Calendar
- Staff Links
- Forms and Documents
- Sexuality Education
- Sports Safety
- Edusave Character Award
- Cyber Wellness in Dunearn
- MOE Haze Management
- Dunearn Gmail
- Dunearn Gmail Help
- ECG Booking
- Direct School Admission
- Sec 1 e-Registration (AY2022)
- Student Learning Space
- DSS ICT Helpdesk
- Parent Enquiries on PDLP
- PDLP Procurement Documents
- PDLP Briefing Slides For Parents
- WESTstories – Dunearn Sec

Latest News & Announcements

Release of 2021 GCE O level Results

Dear 2021 Sec 4E/5N and 4NA students,

The 2021 GCE O level results will be released on the following dates:

You will be notified by your 2021 form teachers on the following dates for the release of the O level results.

[Read more](#)

Page Count: **3529741**

Pls submit your queries at go.gov.sg/pdlpenquiry

Or from the school website at
dunearnsec.moe.edu.sg

THANK YOU